

ARLINGTON HEIGHTS ADDITION

BLOCKS 3 & 4 SEE PAGE 1

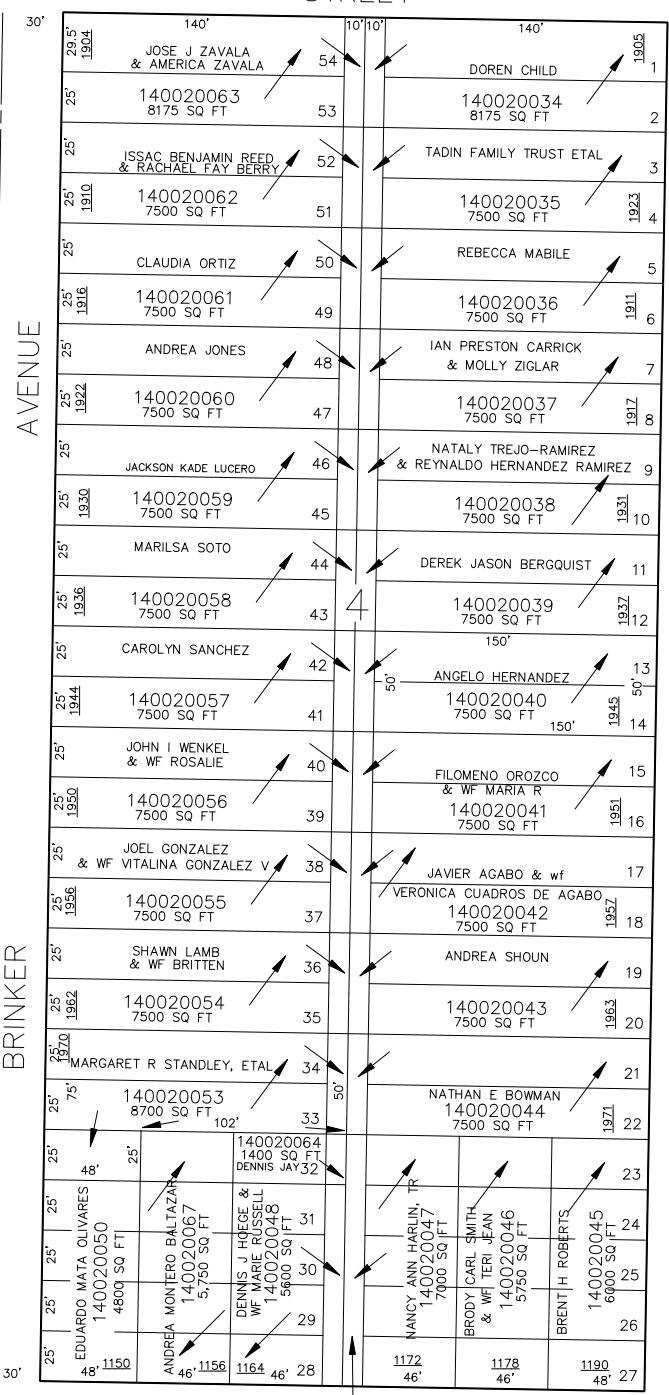
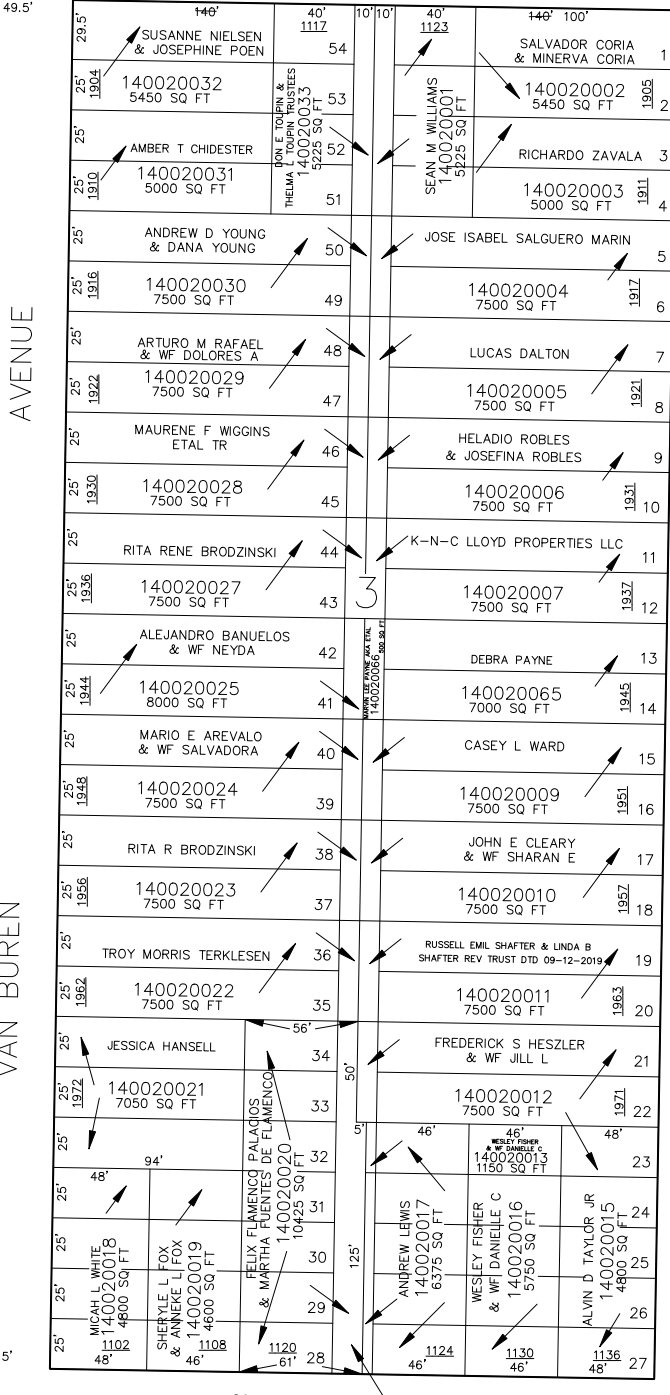
FOR COMPLETE ENG DATA SEE ORIGINAL DEDICATION PLAT IN BOOK 7, PAGE 38 OF RECORDS.

TAXING UNIT: 25

19TH

IN OGDEN CITY
SCALE 1" = 50'

STREET



SEE PAGE 4

14

SEE PAGE 6

FOR TAX PURPOSES ONLY

SEE BOOK 13, PAGE 114

BM 5-94